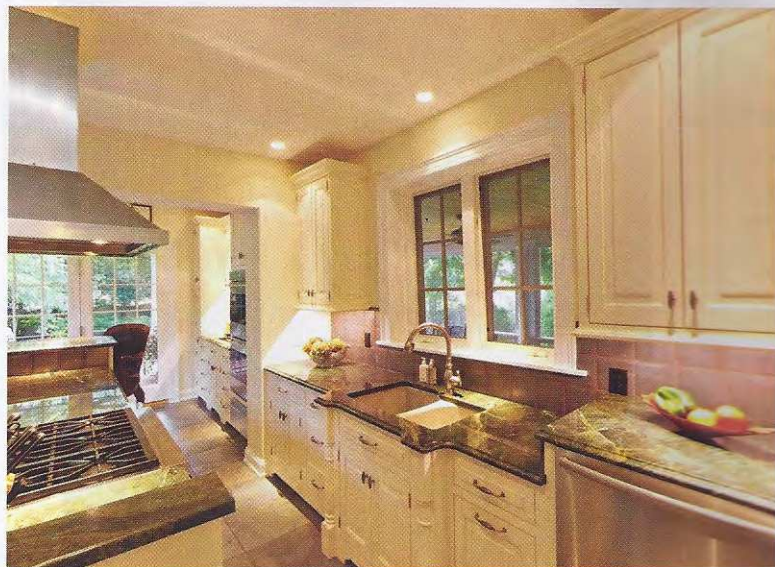




RENOVATION OF AN HISTORIC “GALLEY”

» PHOTOS COURTESY 314 DESIGN STUDIO



This circa-1910 home in Chestertown was in need of a major renovation, updating both aesthetics and functionality of the kitchen. The original floor plan consisted of small segregated spaces. Because the homeowners are avid entertainers, this project called for structural renovation—breaking down separate rooms (kitchen, mud room, laundry, pantry) and opening doorways. A “galley” kitchen layout was decided upon for this new narrow, yet long space. The resulting kitchen incorporates eclectic antique furnishings, flush inset cabinet doors, turned legs at the range, decorative furniture toe appliques on base cabinets, a classic four and a quarter cabinet crown, under cabinet soffit trims, and more features to help the cabinetry feel more like furniture. In addition to new, high-end appliances, other highlights include porcelain flooring, jungle green granite countertops, aged metallic tiles for the backsplash, and LED under-cabinet lighting.